

MPCFE(I)Z(H)-7283

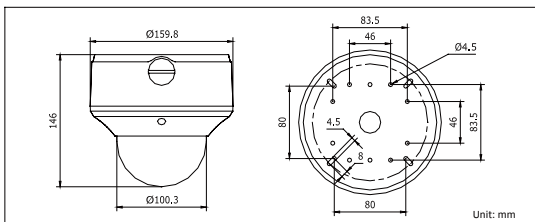
5MP Outdoor Network Camera



Key features

- 5 mega-pixel (2560 x 1920) high resolution
- Full HD1080p real-time recording
- 1/2.5" progressive scan CMOS
- Motorized VF lens
- Day / night auto switch
- Vandal-proof housing
- IP66 rating
- 30m IR LEDs optional (-I)
- Built-in heater & fan optional (-H)

Dimensions



Specifications

| MPCFE(I)Z(H)-7283 | |
|-----------------------------|---|
| Camera | |
| Image sensor | 1/2.5" progressive scan CMOS |
| Min. illumination | 0.6 lux @F1.2, AGC on, 1 lux @F1.6, AGC on, -I: 0 lux with IR |
| Shutter time | 1/25s ~ 1/100,000s |
| Lens | 3.5 ~ 9 mm @F1.6, angle of view: 92 ~ 36 |
| Lens mount | Φ14 |
| Auto iris | DC drive |
| Angle adjustment | Pan: 0 ~ 355, tilt: 0 ~ 80, rotation: 0 ~ 355 |
| Day & night | Electronic (-I: IR cut filter with auto switch) |
| Compression Standard | |
| Video compression | H.264 / MPEG4 / MJPEG |
| Bit rate | 32 Kbps ~ 16 Mbps |
| Dual stream | Yes |
| Image | |
| Max. Image Resolution | 2560 1920 |
| Frame rate | 50 Hz: 6.25fps (2560 x 1920), 12.5 fps (2048 1536), 25 fps (1920 1080), 25 fps (1600 1200), 25fps (1280 x 720) 60 Hz: 7.5fps (2560 x 1920), 15 fps (2048 1536), 30 fps (1920 1080), 30 fps (1600 1200), 30fps (1280 x 720) |
| Image settings | Saturation, brightness, contrast adjustable by client software or web browser |
| Network | |
| Network storage | NAS (iSCSI optional) |
| Alarm trigger | Motion detection, tampering alarm, network disconnect, IP address conflict, storage exception |
| Protocols | TCP/IP, HTTP, DHCP, DNS, DDNS, RTP/RTSP, PPPoE, SMTP, NTP, SNMP, HTTPS, FTP, 802.1x, Qos (SIP, SRTP, IPv6 optional) |
| Security | User authentication, watermark |
| Interface | |
| Communication interface | 1 RJ45 10 M / 100 M Ethernet interface |
| Video output | 1 Vp-p composite output (75 /RCA) |
| On-board storage | Built-in Micro SD slot, up to 32 GB |
| Reset button | Yes |
| General | |
| Operating conditions | -10 C ~ 60 C (14 F ~ 140 F), humidity 90% or less (non-condensing) -H: -40 C ~ 60 C (-40 F ~ 140 F) with heater and fan on |
| Power supply | 24 VAC ± 10%, PoE (802.3af) -H: 24 VAC ± 10%, High PoE (802.3at) |
| Power consumption | max. 9W -I: max. 12W -H: max. 24W with heater on |
| Impact protection | IEC60068-2-75Eh, 50J; EN50102, up to IK10 |
| Ingress protection level | IP66 |
| IR range | -I: approx. 20 ~ 30m (65.6-98.4ft) |
| Dimensions | Φ159.8 146 mm (Φ6.29" 5.75") |
| Weight | 2100g (4.62 lbs) |

Available models

MPCFEZ-7283 MPCFEIZ-7283, MPCFEZH-7283, MPCFEIZH-7283

- * -H: built-in heater and fan
- * -Z: motorized VF lens
- * -I: IR LEDs, up to 30m

* Product picture and technical specs subject to change without previous notice.
For further information, please contact our local sales representatives.